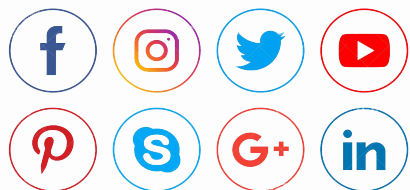


# T3 Modular Display Systems









# Contents

---

- |   |  |
|---|--|
| <b>4.</b> T3 Modular Display System       | <b>16.</b> Shell Scheme Displays             |
| <b>6.</b> The Simplicity of T3            | <b>18.</b> Conference Sets & Events          |
| <b>7.</b> T3 Graphic Substrates           | <b>20.</b> Fabric Walls & Display Lightboxes |
| <b>8.</b> Speed & Ease of Build           | <b>22.</b> Retail Display & POS Solutions    |
| <b>10.</b> Creative Design Features       | <b>24.</b> Bars & Counters                   |
| <b>12.</b> Reconfigurability              | <b>26.</b> Experiential Displays             |
| <b>14.</b> Freestanding Exhibition Stands | <b>27.</b> Entrance Features                 |

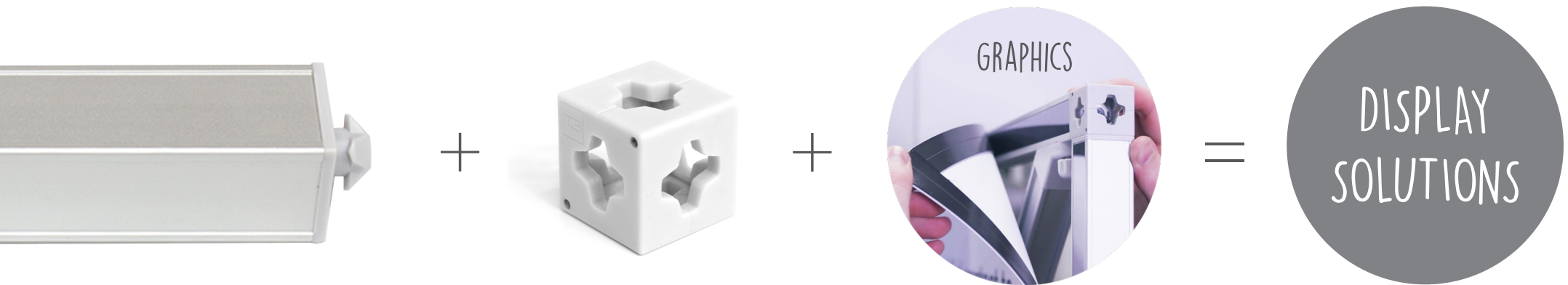






## T3 Modular Display System

---



### What is T3?

T3 is the world's most innovative, easy-to-build, compact, and flexible aluminium display system.

Manufactured in the UK, T3 is unique because it is versatile, durable, reconfigurable, and reusable. It's the perfect solution for any modular display application.

It's also brilliantly simple to use: just twist and lock the connectors and beams together. This innovative design means that no tools are required!

No other system can compete on speed of build or ease of use.

Adapt T3 to a wide variety of display environments and products:

- Exhibitions
- Conferences
- Retail
- Hospitality
- Point of Sale
- Experiential Events
- Counters
- Kitchens
- Pop-Up Shops
- Light Boxes
- Photobooths
- Hanging Banners

Easily apply multiple substrates to the system, including rigid and rollable panels as well as tension fabric, to create a completely seamless graphic display. Mix and match substrates for a dynamic effect!

The versatility of T3 allows you to push design potential by incorporating a wide range of components and materials into your display. These could range from wood cladding to the latest AV technology!

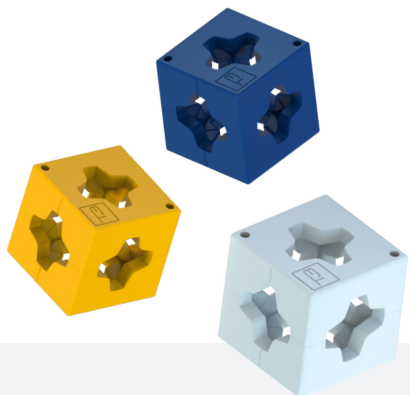


# T3 DECO

The world's most versatile modular display system is also available in an exciting array of standard and custom colours! We call it T3 DECO.

This marks a new era in the modular display universe where exposed framework can now be utilised as a modern and impactful design feature for a huge variety of display applications.

Now, beams and connectors can be interchanged to create interesting colour combinations. And with a host of other T3 fixings available, you can create dramatic display shapes and forms with your favourite modular display system!



## COLOUR MATCH YOUR BRAND COLOURS



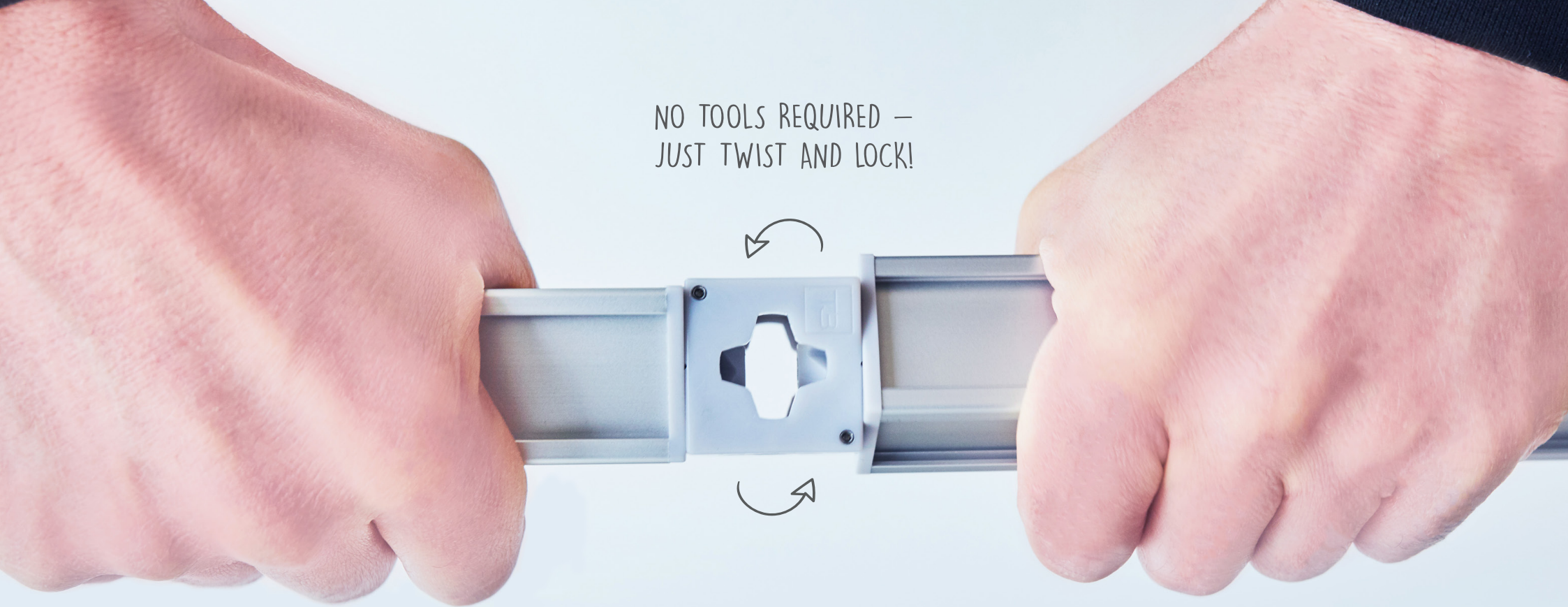
## ...THINK IN COLOUR

### STANDARD COLOUR VALUES (CUSTOM COLOURS ALSO AVAILABLE)



\*Please note that minimum order quantities and increased lead times apply to the T3 DECO range





NO TOOLS REQUIRED —  
JUST TWIST AND LOCK!

## The Simplicity of T3

In its simplest form, a T3 display consists of three different elements:

- **The T3 plastic connector**
- **Lightweight T3 aluminium beams**
- **Your choice of substrate**

The beauty and uniqueness of T3 is in the "twist & lock" feature – no tools are required.

- Designed and manufactured in the UK
- No need for skilled labour – no levers to contend with
- Build structures in minutes, not hours
- Lightweight and compact for reduced shipping and storage costs
- Easy to reconfigure and reuse to maximise your budget
- Able to be load-bearing
- Custom beam and curve sizes available
- Create seamless graphic finishes



# T3 Graphic Substrates

APPLY ANY  
SUBSTRATE —  
THESE ARE THE  
MOST POPULAR!



SEMI RIGID

## Semi-rigid Substrate

- Easy application using magnetic tape
- Transport rolled up in heavy duty graphics drums (up to 18M<sup>2</sup>)
- Perfect for curved structures
- Able to be cleaned



RIGID

## Rigid Substrate

- Easy application using magnetic tape or Velcro
- Lightweight
- Range of thicknesses
- Able to be cleaned



FABRIC

## Fabric Substrate

- Can create a truly seamless graphic finish
- Lightweight
- Transport folded without damaging the graphic!
- Able to be washed





## Speed & Ease of Build

---

**Create any display you can imagine - with ease.**

Your T3 display can be as simple or complex as you like!

And all because of a brilliantly simple, patented "twist & lock" action. Simply push the beam into the connector and twist until it locks into place.

Push your design potential. Go as high as you like, create multiple levels, incorporate angles, use shapes and curves, as well as integrate shelving, AV and a multitude of other feature areas.

- **No levers to pull**
- **No tools required**
- **Build faster than conventional display systems**
- **No heavy framework to bolt together**

TRANSPORT YOUR  
DISPLAY IN CONVENIENT  
FLIGHT CASES









## Creative Design Features

---

### **Integrate & innovate.**

There are no limitations with what you can achieve with a T3 modular display.

A T3 modular display is:

- Adaptable to a variety of environments
- Can grow with requirements
- Quick and easy to build and dismantle
- Incorporate the latest tech equipment
- Use in conjunction with other display systems

Additional design features include:

- LED and spotlight illumination
- Archways and gantries
- Storage and meeting rooms
- Slatwalls and shelving
- Glass shelving and showcases
- Product displays and counters
- Custom and T3 doors
- Clad with multiple substrates such as:
  - Rigid panels - ACM, foam board, wood, acrylic etc.
  - Semi rigid/rollable panels
  - Tension Fabric - Dye sub, UV, backlit etc.





SIMPLE SYSTEM,  
AMBITIOUS DISPLAYS!

- ① **LED walls**  
Any sized AV screen, surface or flush mounted.
- ② **8M and higher**  
Be ambitious with your display height!
- ③ **Curved counters**  
Bars, pop-up kitchens, counters, podiums, reception desks.
- ④ **Product display staging**  
Elevated, curved, square, or any shaped stage.
- ⑤ **Portable counter**  
Storage, lockable, reception counter, bar, angled/curved lightboxes.
- ⑥ **Illumination**  
Under-shelf lighting, downlights, spotlights, backlighting etc.
- ⑦ **Lightbox**  
Any shape, curved, angled...
- ⑧ **Transparent walling**  
Use transparent walling to define your stand space with a spacious feel.
- ⑨ **Private meeting area**  
Great for changing rooms, lockable storage, meeting areas and much more!





## Reconfigurability

T3 can be adaptable to a wide variety of display environments. With just one set of components, you can reconfigure to create many different display designs. So, don't just limit yourself to one display – create multiple!

FROM ONE SET  
OF KIT, CREATE  
MULTIPLE DISPLAYS!





TURN THE PAGE TO  
DISCOVER THE  
ENDLESS DISPLAY  
POSSIBILITIES!



# Freestanding Exhibition Stands

**For every shape & size.**

Create that custom look and feel with a T3 exhibition stand. Integrate any feature you need.

- Incorporate product displays
- Illuminate with a variety of lighting options
- Integrate AV and other tech features
- Include doors and storage rooms
- Use curves, angles and shapes
- Combine with custom features to achieve a hybrid solution

6M HIGH  
EXHIBITION  
STAND!











T3 SHELL KIT CLAMP

## Shell Scheme Displays

### T3 Shell-kit clamp and freestanding displays.

Maximise every inch of shell scheme space at exhibitions with the T3 Shell Kit Clamp. Alternatively, create reusable freestanding displays and include additional features.

- No tools required for build or dismantle
- Create seamless graphics within the shell scheme
- Integrate AV equipment
- Add counters, shelving or product displays
- Integrate lightboxes for added impact

STEP 1



Insert into the shell scheme channel.

STEP 2



Tighten and secure in the upright position.

STEP 3



Position T3 beam and secure with the clamp.









## Conference Sets & Events

### Backdrops, walls & branding.

Set the scene and deliver maximum impact at conferences, events, product launches, and roadshows.

- Design with shapes, angles and different heights
- Fabric walls allow for high impact graphics
- Use different substrates for different effects
- Create atmosphere with dramatic lighting
- Incorporate AV including projection scenes and LED walls











## Fabric Walls & Display Lightboxes

---

### Advertising, experiential & events.

T3 modular walls and lightboxes are a quick and effective way to dress a space and make an immediate impact with your brand and message.

- Use light diffusing fabrics or translucent graphics
- Straight or curved
- Freestanding or integrated
- Variety of shapes and sizes



HUAWEI Ascend P1

T3 LITEBOX

TWIST  
LOCK  
LIGHT









## Retail Display & POS Solutions

---

### Point of sale, window displays & concessions.

Use permanent or semi-permanent displays to advertise or showcase your product in any retail environment.

- Counter tops and product display units
- Design with curves, shapes and angles
- Integrate touch screens
- Incorporate different lighting options
- Display, hang, showcase, and store products









## Bars & Counters

### Demonstration, reception & serving areas.

Create the space you need to demonstrate, serve or introduce your product or service.

- Straight, curved or angled
- Large or small, multiple or single counters
- Use different heights and lengths
- Integrate appliances, beer taps and serving areas
- Incorporate lighting and audio visual









# Experiential Displays

## Features, centerpieces & interactive displays.

Create a host of experiential features and displays which are quick and easy to install and dismantle.

- Registration and hospitality areas
- Entrance tunnels
- Portable display units
- Centrepieces and features
- Interactive kiosks







## Entrance Features

### Welcome points, registration desks & wayfinding.

Make the right first impression with your audience and keep them informed throughout the event.

- Interactive panels
- Column wraps
- Fabric walls and lightboxes
- Counters and information points
- Promotional displays and signage







#### Office

The Roost, Hurley,  
Atherstone, Warwickshire,  
CV9 2JW.  
United Kingdom.

Tel: +44 (0) 1827 870460

Fax: +44 (0) 1827 870461

Email: [enquiries@idevents.co.uk](mailto:enquiries@idevents.co.uk)

web: [www.idevents.co.uk](http://www.idevents.co.uk)

#### Manufacturing Workshop

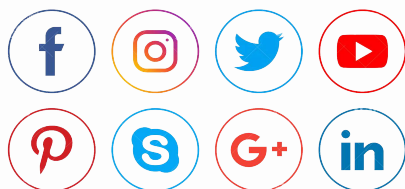
Unit 1,  
Deykin Avenue Industrial  
Estate, Birmingham,  
West Midlands,  
B6 7HN.  
United Kingdom.

Tel: +44 (0) 121 327 6198

#### Modular Systems Warehouse

Unit Y,  
Tib Hall Farm, Hurley,  
Atherstone, Warwickshire,  
CV9 2JN.  
United Kingdom.

Tel: +44 (0) 1827 870462



Registered in England : 1082490  
VAT Registration No : 272418210  
All Image Rights Reserved